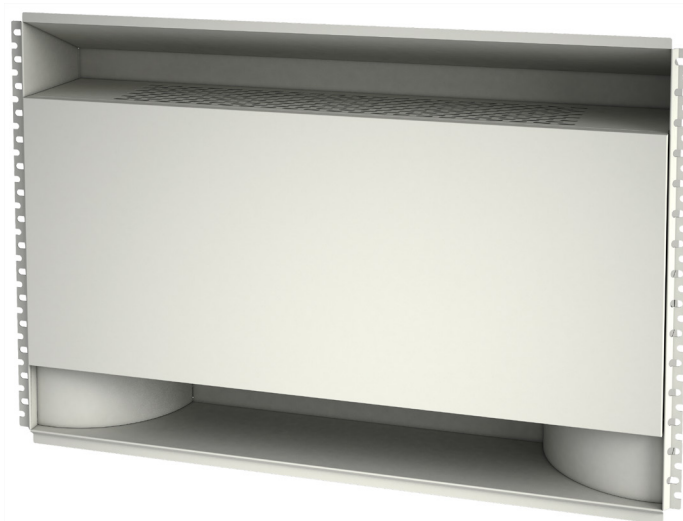


Climabox

Recessed wall-mounted convection heater



Climabox is the innovative built-in wall convection radiator for heating systems. It was created to meet the needs for space rationalization according to modern architecture criteria for interiors and the current need for energy saving.

Characteristics

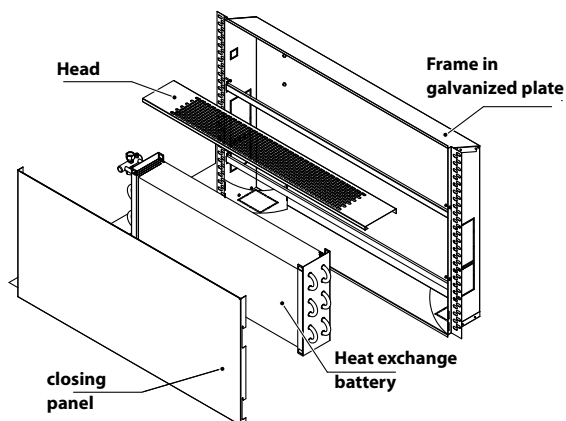
- Available in 3 sizes with double or triple battery.
- **Climabox** consists of several parts to be assembled:

1. **Frame in galvanized** and painted plate that allows the heat exchanger to be installed in the wall.
2. **Heat exchanger**, designed for maximum intensification of the natural convection effect, constructed of copper piping and fining.
3. **Closing panel** supplied, which allows the materials, desired look and colour of the panel to be customized. Once the work is complete, the heating unit will be completely hidden from view.
4. **Head**
Located on the upper horizontal part of the panel, it is available with a fixed metallic grille.

parts of the frame are treated so they can be painted with the same paint as the wall.

The **Climabox** convection heater is the ideal terminal for heating any room. Heat is supplied instantly and uniformly distributed throughout the area. It can be added to a heating system powered by a boiler, district heating system or heat pump. The possibility of easily removing the cover allows for thorough cleaning of the interior.

Ease of installation with reversible water attachments in the installation phase. Full compliance with safety and injury prevention regulations



The closing panel and all of the visible

Unit choice

Any model can be configured by changing the available options.

Logo:

CLIMABOX

Size:

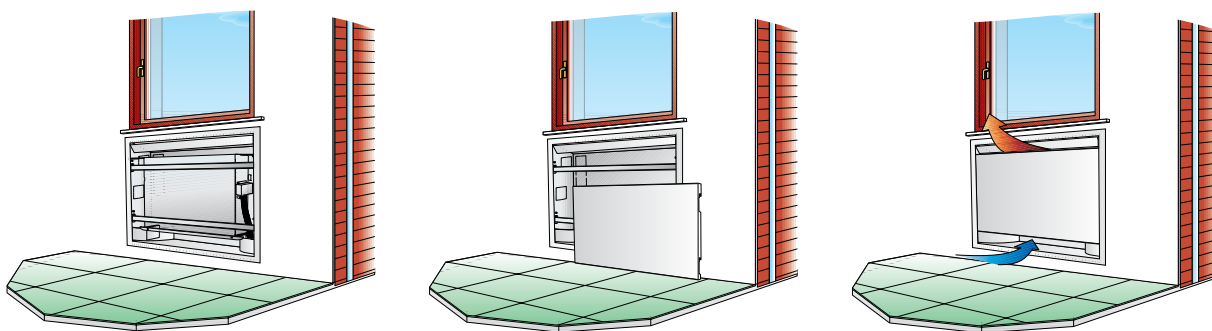
2, 3, 4

Battery:

- 2 - Double
- 3 - Triple

Grille:

Fixed grille



Technical data

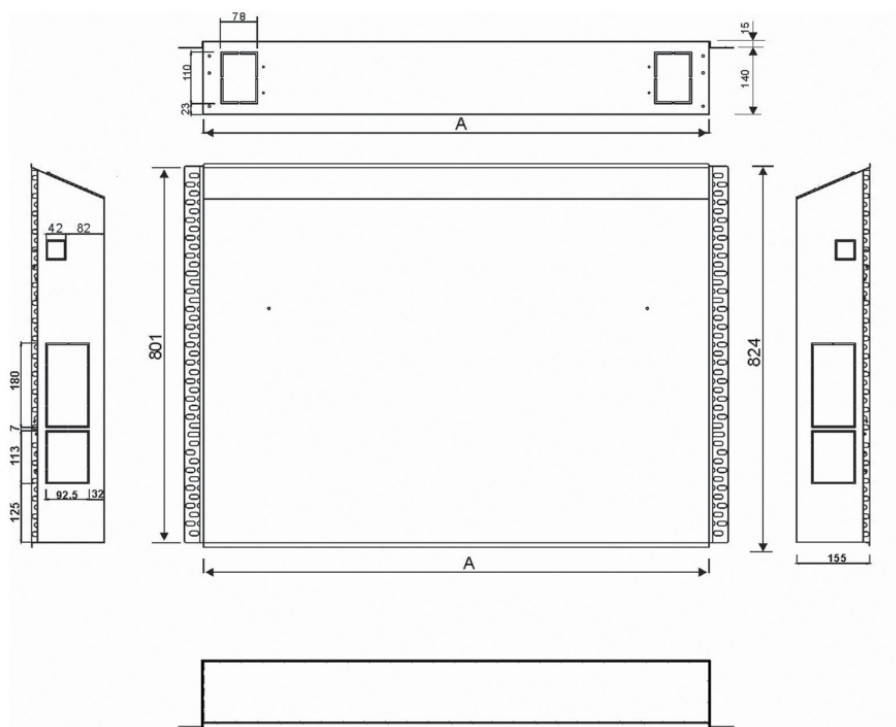
Mod.		CBX 22	CBX 23	CBX 32	CBX 33	CBX 42	CBX 43
Thermal power	W	1220	1330	1610	1755	2005	2180
Water flow rate	l/h	105	114	138	151	172	187
Water pressure drop	kPa	0,5	0,72	0,95	1,36	1,31	1,91
Water content	l	0,8	1,1	1	1,4	1,1	1,6
Battery connectors	ø gas	1/2" Female					

Data in compliance with standard UNI EN 442

HEATING

Water input temperature	75 °C
Water output temperature	65 °C
room temperature	20 °C ($\Delta T_0=50$ °C)

Dimensions (mm)



CHF			22	23	32	33	42	43
Height	A	mm	155	155	155	155	155	155
Width	A	mm	884	884	1084	1084	1284	1284
Exchanger width		mm	625	625	825	825	1025	1025